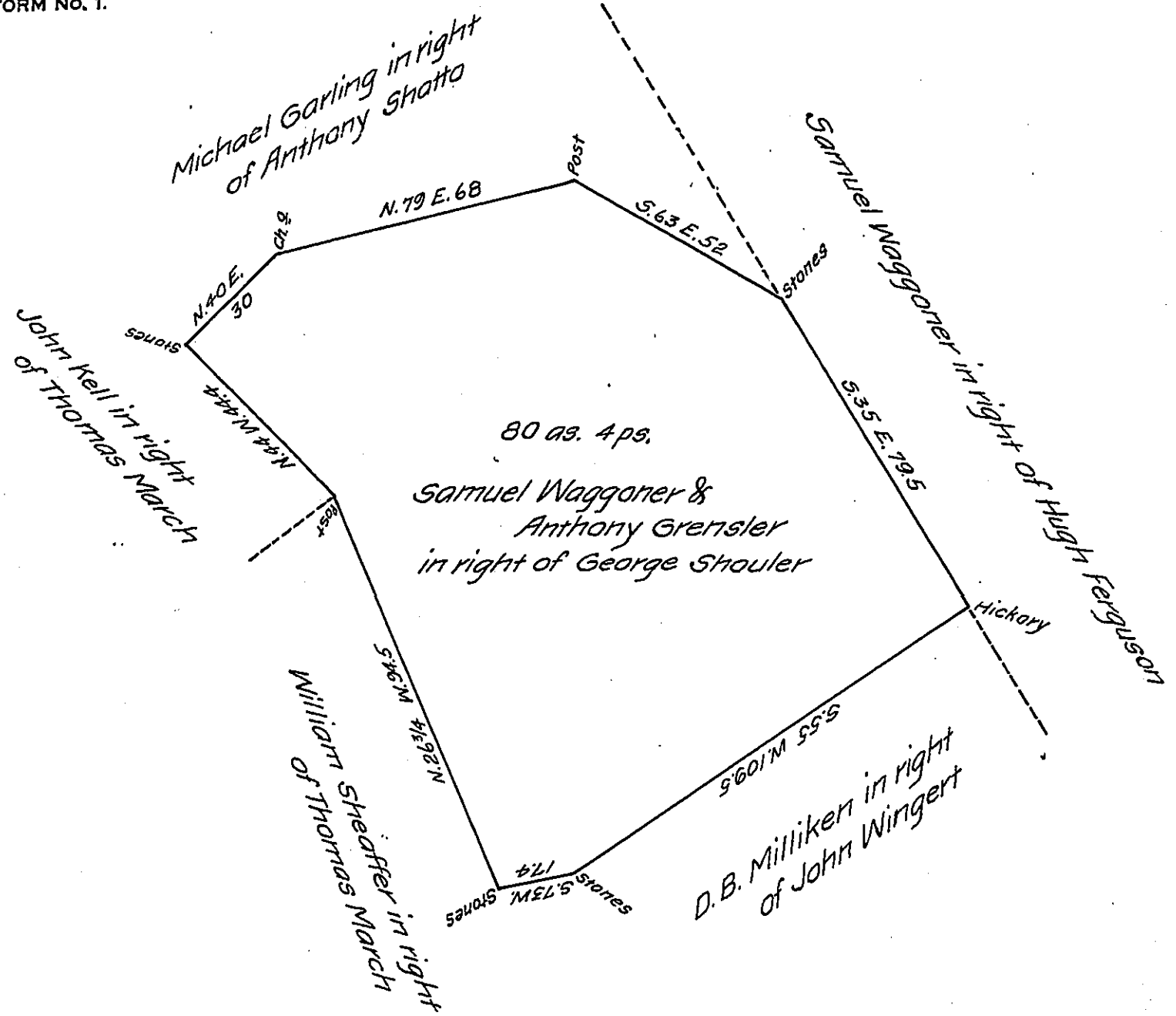


FORM NO. 1.



Draft of a tract of land in Spring Township Perry County, Pa., containing 80 acres 04 ps. Surveyed Sept. 4, 1815, on a Warrant to George Shouler for 80 acres, dated July 19, 1810. R. Robert Clark, D.S.

I hereby certify the above to be a true copy of a draft remaining in the Surveyor's office for Perry county. Witness my hand this 11th day of December, 1864. Daniel Rife, D.S.

IN TESTIMONY that the above is a copy of the original remaining on file in the Department of Internal Affairs of Pennsylvania, made conformably to an Act of Assembly approved the 16th day of February 1833, I have hereunto set my hand and caused the Seal of said Department to be affixed at Harrisburg, this twenty-eighth day of January, 1908.

*Henry Howell*  
Secretary of Internal Affairs.